

Hiking & Biking Trails

Chetwynd's hiking trail system evolved through a series of community projects, with the assistance of many local residents. Mr. Dave Gee was one of the first supporters of the trail system in 1980, along with the Chetwynd Secondary School and the Chamber of Commerce. Other participants have included corporate sponsors, the Senior Physical Education classes at Chetwynd Secondary School under the leadership of Stu Garland, and the Chetwynd Environmental Society. The Chetwynd Community Forest Society was active in developing the Community Forest trails, and the Chetwynd Cross Country Ski Club helped to build the cross-country ski trails located in the Community Forest. Most recently, through the "Trails for Tomorrow" program, extensive trail upgrades, new trail construction and new signage has been added to the Chetwynd trail system during the summer of 2009. New benches and trail markers have been installed along many of the trails in the area.

The **Connector Trail** leads from the Little Prairie Heritage Museum to a junction with the Mt. Baldy Trail, then continues on to Widmark Falls. Use caution on this trail as some parts are steep.

The **Baldy Trail** takes a scenic route up the side of Mt. Baldy. Leave from either the parking area along 45 Avenue or from the powerline access along Highway 29 and follow the trail to the summit of the mountain. A viewpoint has been constructed approximately halfway up which provides excellent views of the town and the valley. The viewpoint is a good place to take a break or turn around. Once at the top of the mountain, the adventurous can continue to follow the trail to Ghost Mountain. Use caution along this section of the trail as some sections are steep.

Chetwynd's Community Forest features two trail systems. The first is an interpretive trail leading hikers through the community forest. The second is the snow shoe trails, which are very popular in winter.

The **Windrem Trail** winds through town, starting at Don Titus Elementary School and ending near the Legion building. This trail is quite flat and makes a very pleasant evening or morning stroll. Watch for traffic at several street crossings.

The **Centurion Creek Trail System** contains many different interconnecting trails. On this trail network you can explore the creek, where you may see beavers and many types of birds. There are many different points where you can enter and exit this trail system, making it ideal for multiple hiking trips.

Detailed trail maps are available at the Visitor Centre
5217 North Access Road just off Highway 97



History of the Chainsaw Carvings

Chetwynd has been collecting chainsaw carvings since 1992, when two local residents approached the Rendezvous '92 Committee with the idea of commemorating the 50th anniversary of the construction of the Alaska Highway by purchasing and installing chainsaw carvings to beautify the community. The chainsaw carvings were chosen as an attraction for Chetwynd because it was believed that they showcased the true heart and soul of Chetwynd. The predominantly nature-focused



Where to Stay

Chetwynd offers a full range of accommodations including full-service hotels, motels and cozy B&Bs. Campers can enjoy a stay in one of several well-equipped RV Parks or at one of the area's spectacular Provincial Parks.

Contact the **Chetwynd Visitor Centre** for a complete list of accommodations in Chetwynd.
Phone (250) 788-1943
Email tourist@gochetwynd.com

Where to Eat

Tempt your tastebuds at one of Chetwynd's many dining establishments. Whether you're craving fast food, in the mood for homestyle cooking, or want a taste of exotic cuisine, you can satisfy it here! Many local restaurants offer daily lunch and dinner specials.

Inquire at the **Chetwynd Visitor Centre** for a complete list of local restaurants.
Phone (250) 788-1943
Email tourist@gochetwynd.com

Summer Activities

Boating
Explore some of Chetwynd's beautiful lakes from the comfortable seat of your boat. Tranquil lake boating experiences are available on Moberly and Gwillim lakes, while non-motorized boaters can paddle the shores of Sundance Lake. Many smaller lakes are accessible via back roads-inquire at the Chetwynd Visitor Centre for a Backroads Map of your own.
For those who crave a little more adventure, the Sukunka, Moberly, and Pine rivers offer jet boating opportunities. Be sure to check the water

conditions of the river you plan to explore before you head out. Depending on water levels, area rivers are popular destinations for canoeists and kayakers as well. There are several put-ins and take-outs along the different rivers, allowing you to customize the length of your trip.

Swimming
Take the plunge and refresh your senses with a dip in one of Chetwynd's area lakes or rivers. Moberly and Gwillim Lake Provincial Parks offer swimming areas. The banks of the Sukunka River south of Chetwynd on Highway 29 offer rock beaches and the occasional sand bar for swimming, wading, and sunbathing. Swimming is also possible in other area water bodies-ask at the Visitor Centre for locations.

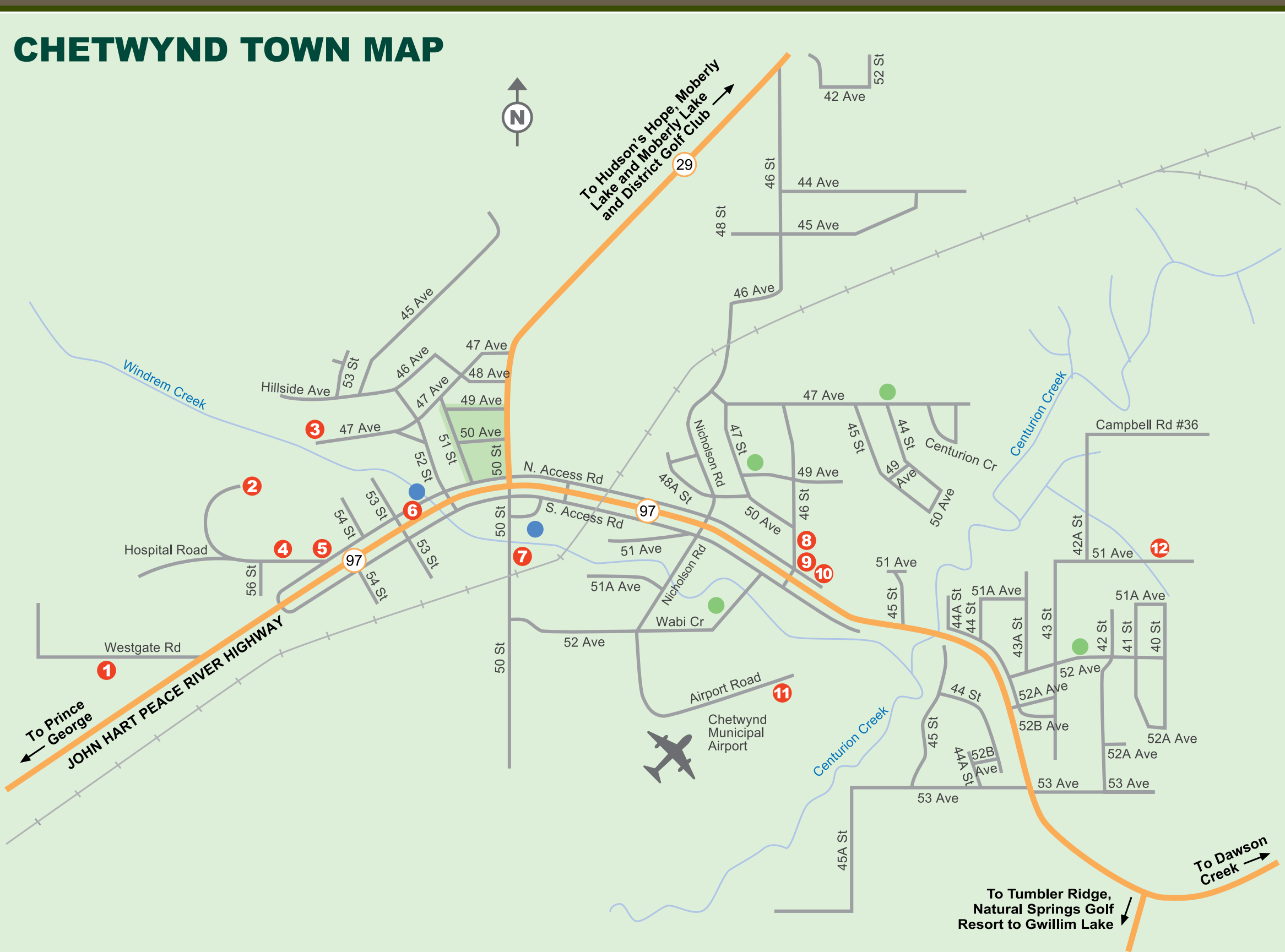
For those who prefer to swim in warmer waters, the **Chetwynd Leisure Pool** is open year round. Ask the Visitor Centre or visit www.gochetwynd.com for the Leisure Pool swim schedule.

Golf
Golfers delight in exploring Chetwynd's two fabulous golf courses. Enjoy a relaxing game and beautiful scenery while you perfect your shots. Chetwynd's courses offer a golf experience that you are sure to savor - you will want to play them over and over again! Both courses host tournaments and special events throughout the season - call the course or ask at the Chetwynd Visitor Centre for details.

Natural Springs Golf Resort
A challenging par 36, 9-hole course located 15 kilometres south of Chetwynd on Highway 29. Natural Springs is sure to test your skills with rolling fairways and numerous creeks and sand traps. Wildlife sightings are common along the Pine River at the back of the course! Unwind after your game at the licensed clubhouse, enjoy a delicious meal and a cool drink on the patio. Club and cart rentals are available. Dry RV parking is available on-site as well. Call 250-788-3944 to book your tee time.

Moberly Lake and District Golf Course
Situated on the hillside overlooking beautiful Moberly Lake, this par 37, 9-hole course offers a variety of challenges. Hilly terrain and tree-lined fairways offer a new challenge to both new and experienced golfers. Club and cart rentals are available. After your game, treat yourself to a great meal and a cold drink at the picnic area overlooking the lake. Call 250-788-3808 to book your tee time.

Pine Valley Exhibition Park
Pine Valley Exhibition Park is located in the Rodeo Subdivision. This facility offers horse stalls and pen rentals, indoor and outdoor riding arenas, a race track, and multiple baseball diamonds. Pine Valley Exhibition Park is home to local gymkhanas, team roping, poker rides, and riding clinics. The baseball diamonds are home to the **Chetwynd Recreational Slo-Pitch League**, and often host tournaments during the summer months.



CHETWYND TOWN MAP

- 1 Little Prairie Heritage Museum
- 2 Hospital
- 3 Tennis Courts
- 4 RCMP
- 5 Municipal Office, Fire & Ambulance Department
- 6 Visitor Centre
- 7 Post Office
- 8 Library
- 9 Chetwynd & District Recreational Centre
- 10 Chetwynd & District Leisure Pool
- 11 Rotary Park
- 12 Pine Valley Exhibition Park

- City Centre
- Parks
- Playgrounds



The Little Giant

The Little Giant came to Chetwynd on July 4, 1966. He was unveiled to the community by Richard Chetwynd, grandson of the Honorable Ralph Chetwynd after whom the town was named. The Little Giant is 9 feet tall and weighs 1,200 pounds.

The Little Giant serves as Chetwynd's mascot. He stands for the spirit of our residents who are hardworking pioneers, having the initiative to work on their problems and stride into the future with pride.

In 2009, the original concrete Little Giant was replaced by a chainsaw carved replica. The new Little Giant was carved by Ken Sheen out of pine which had been affected by Mountain Pine Beetles. The original concrete Little Giant has taken up residence at the Little Prairie Heritage Museum.



Day Trips

Make Chetwynd your home base for exploring the mighty Peace region. Chetwynd's full complement of services will make your stay comfortable and provide you a warm and welcome place to rest after your day's adventures in the area.

DAWSON CREEK: Spend a day exploring the historic city of Dawson Creek. Be sure to visit the N.A.R. park, home to the Art Gallery, Museum, and Visitor Centre. A few steps away is the often-photographed Mile Zero post, marking the official beginning of the Alaska Highway. Other attractions in Dawson Creek include the Walter Wright Pioneer Village, a number of golf courses, shopping, and restaurants.

TUMBLER RIDGE: Take the time to travel out to Tumbler Ridge, where you can walk paths made by dinosaurs. Guided tours of the dinosaur tracks are available in the summer months-contact the Tumbler Ridge Visitor Centre (250) 242-3123 for more information. The Tumbler Ridge Community Centre houses an excellent display of dinosaur fossils including footprints, as well as many other interesting

artifacts. Tumbler Ridge offers a full range of services including fuel, restaurants, and a recreation centre with a pool, weightroom, and climbing wall. Local hiking groups have built and maintain a large number of hiking trails in the area, giving you the opportunity to stroll in the woods and take in some breathtaking views. Detailed maps of the trails are available from the Tumbler Ridge Visitor Centre. The Dinosaur Discovery Gallery opened in 2010 and is a highly interesting attraction featuring fossils and information about the dinosaur discoveries in the area. Contact the Tumbler Ridge Visitor Centre for more information.

HUDSON'S HOPE: The land of dinosaurs and dams, Hudson's Hope is a great place to explore the distant past and also to learn about hydroelectricity. Hudson's Hope is the home of both the Peace Canyon and W.A.C. Bennet dams. The Peace Canyon dam offers self-guided walking tours during the summer months. The W.A.C. Bennet dam has a visitors' centre complete with restaurant, where films of the construction of the dam are shown and several interactive displays are available to help you learn how the dams work. The W.A.C. Bennet dam also offers underground tours-take a ride on the tour bus right inside the dam! The Hudson's Hope Museum, located across the street from the Visitor Centre, houses an excellent collection of dinosaur fossils and local artifacts. Hudson's Hope is a full service stop with gas stations, restaurants, shopping, and parks where you can stop and enjoy the scenery.

Visitor Centre



Chetwynd's Visitor Centre is located at 5217 North Access Road just off Highway 97. Stop by at any time of year for an excellent selection of local, regional, provincial, and national information. The Chetwynd Visitor Centre also stocks a wide range of gift items and souvenirs, featuring local artists. Come in and browse through the information, pick up gifts, or talk with any of the knowledgeable, professional Visitor Information Counsellors who will be more than happy to help you plan your vacation.

Annual Events

Visit the Visitor Centre for dates and more details on these and other exciting Chetwynd events!

International Chainsaw Carving Championship: Come on down to the Chetwynd Recreation Centre and watch amazing artists work their magic with chainsaws.

Canada Day: Watch or join in the parade, then meet up with the rest of the community down at the Recreation Centre for a day of fun games and activities.

Halloween Ghoulish Affair: The Spooky Season brings fun and excitement for the whole family on Halloween!

Santa Night: celebrate the Christmas season with Santa in downtown Chetwynd.

By: Jane Martin

Chetwynd History



Chetwynd was originally called Little Prairie by the First Nations people who traveled through the area. Fur traders came to the area of Little Prairie as early as 1778 following the water routes and pack trails of the day. By 1919 a log cabin, built on the site just north of the present rail yard opened as a small Trading Post. This attracted

a number of others to build around it, and so the community of Little Prairie grew.

The Pacific Great Eastern Railway, or P.G.E. as it was originally known, arrived officially on April 8th, 1958 in Little Prairie. The Railway station was built in 1959 and Chetwynd became a divisional point for the railroad. When the Pacific Great Eastern Railway arrived in Chetwynd they officially named the divisional point Chetwynd in honor of the Hon. Ralph Chetwynd, past Minister of Railways and staunch supporter of development in the Peace Region. The Post-office and community followed their lead.

Chetwynd was incorporated as a village in September of 1962, and was re-incorporated as a district in 1983.



Little Prairie Heritage Museum

Come and explore the history of the Chetwynd area at the Little Prairie Heritage Museum. Featuring five buildings and a caboose full of artifacts including dinosaur fossils, a collection of over 2,500 cream pitchers, household items and much more, the Little Prairie Heritage Museum is an ideal place to spend an afternoon. A beautiful gazebo on the grounds provides a great place to take photos. The museum is open Tuesday through Saturday during the summer months and is located 2 km west of Chetwynd on Westgate Road. Guided tours are available during the off season. Please contact the Chetwynd Visitor Centre for more information.

Fall & Winter Activities



Hunting

Wildlife is abundant in the fertile valleys and rolling hills near Chetwynd. Hunters have the opportunity to try for deer, moose, elk, caribou, black bears, and grizzly bears. Limited entry draws are available for mountain goats, buffalo, and other species. Whether you join a licensed guide outfitter or head out on your own, hunting in the Chetwynd area is sure to be an experience you will never forget! Hunting licenses and tags can be purchased at several locations in and around Chetwynd.

Snowmobiling

Chetwynd and area is famous for excellent snow conditions, a long riding season, great trails to suit riders of all skill levels, and full services for snowmobile enthusiasts. Visit local snowmobile shops for gear, parts or tips before you head out on one (or more!) of the fantastic trails in the area. Silver Sands, Callazon and Powder King areas are very popular, as are Hasler and the Burnt areas. Inquire locally about radio channels for back road access. Many local accommodations offer special packages for snowmobilers - call the Chetwynd Visitor Centre for more information. Be sure to stop by and pick up a copy of the local snowmobile trail map and the latest snow reports!



HASLER SNOWMOBILE TRAIL NETWORK

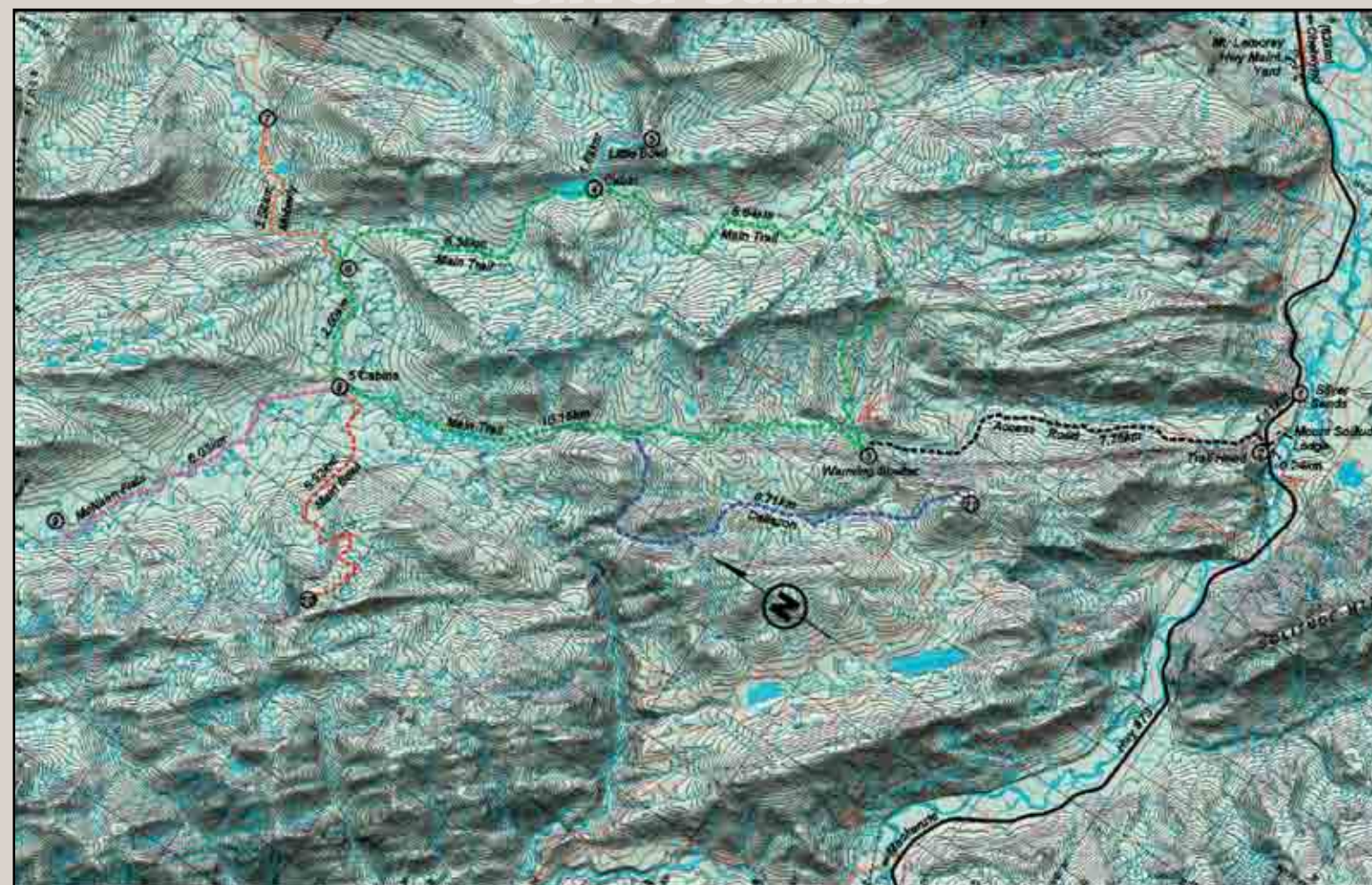
| | | |
|----------------------|------------|-------------|
| 1. TRAIL HEAD | N55 23'03" | W122 16'12" |
| 2. MURRAY'S PUB SIGN | N55 22'17" | W122 19'26" |
| 3. SADDLE | N55 22'08" | W122 20'04" |
| 4. SHADOW BOWL | N55 22'16" | W122 21'07" |
| 5. WOLF CREEK | N55 21'37" | W122 18'05" |
| 6. SUNSHINE BOWL | N55 21'58" | W122 20'19" |
| 7. HELI PAD | N55 21'48" | W122 21'00" |
| 8. OVERHANG | N55 21'29" | W122 20'34" |
| 9. ALUMINUM BOWL | N55 20'44" | W122 20'00" |
| 10. ALUMINUM SADDLE | N55 20'29" | W122 19'36" |
| 11. LAKE MEADOW | N55 19'55" | W122 19'24" |
| 12. BEAR DEN | N55 19'22" | W122 18'05" |
| 13. BACK MEADOW | N55 19'30" | W122 17'23" |
| 14. LOST MEADOW | N55 18'56" | W122 17'07" |

SILVER SANDS SNOWMOBILE TRAIL NETWORK

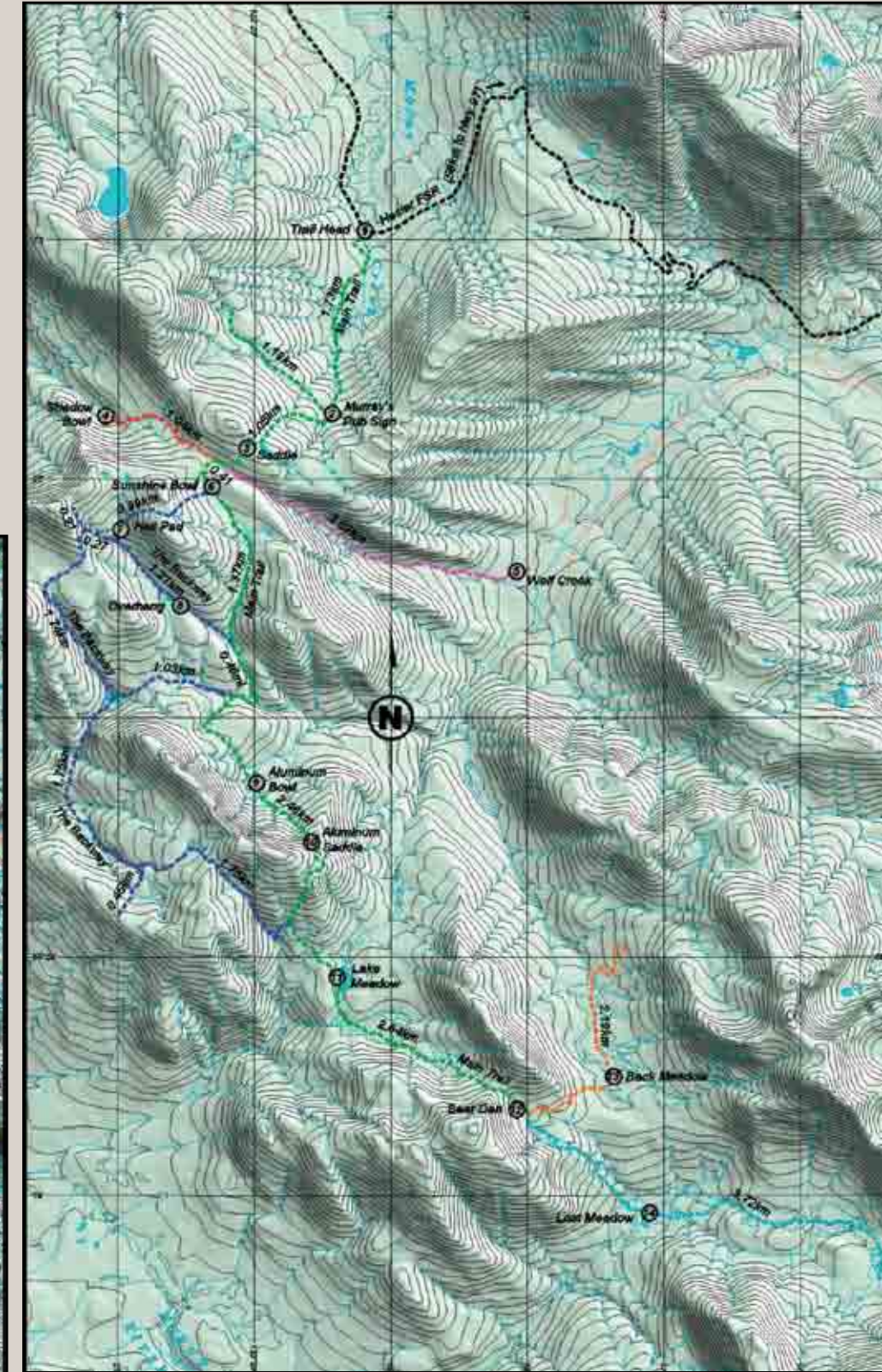
| | | |
|-------------------------|------------|-------------|
| 1. SILVER SANDS | N55 30'39" | W122 33'24" |
| 2. TRAIL HEAD | N55 30'37" | W122 34'23" |
| 3. WARMING SHELTER | N55 33'40" | W122 38'08" |
| 4. CABIN | N55 37'09" | W122 37'10" |
| 5. LITTLE BOWL (SUMMIT) | N55 37'00" | W122 36'00" |
| 6. TRAIL JUNCTION | N55 38'43" | W122 40'26" |
| 7. MOBERLY TRAIL END | N55 40'00" | W122 39'15" |
| 8. 5 CABINS | N55 38'05" | W122 42'06" |
| 9. MCNAIRN TRAIL END | N55 39'29" | W122 46'36" |
| 10. TRAIL END (SUMMIT) | N55 37'10" | W122 45'10" |
| 11. CALLAZON (SUMMIT) | N55 32'36" | W122 37'54" |

CONTACT INFO:
PINE VALLEY TRAIL BLAZERS SNOWMOBILE CLUB
PHONE: 250-788-2373 OR 250-788-9128
FAX: 250-788-2399
BOX 2415, CHETWYND, BC V0C 1J0

Silver Sands



Hasler



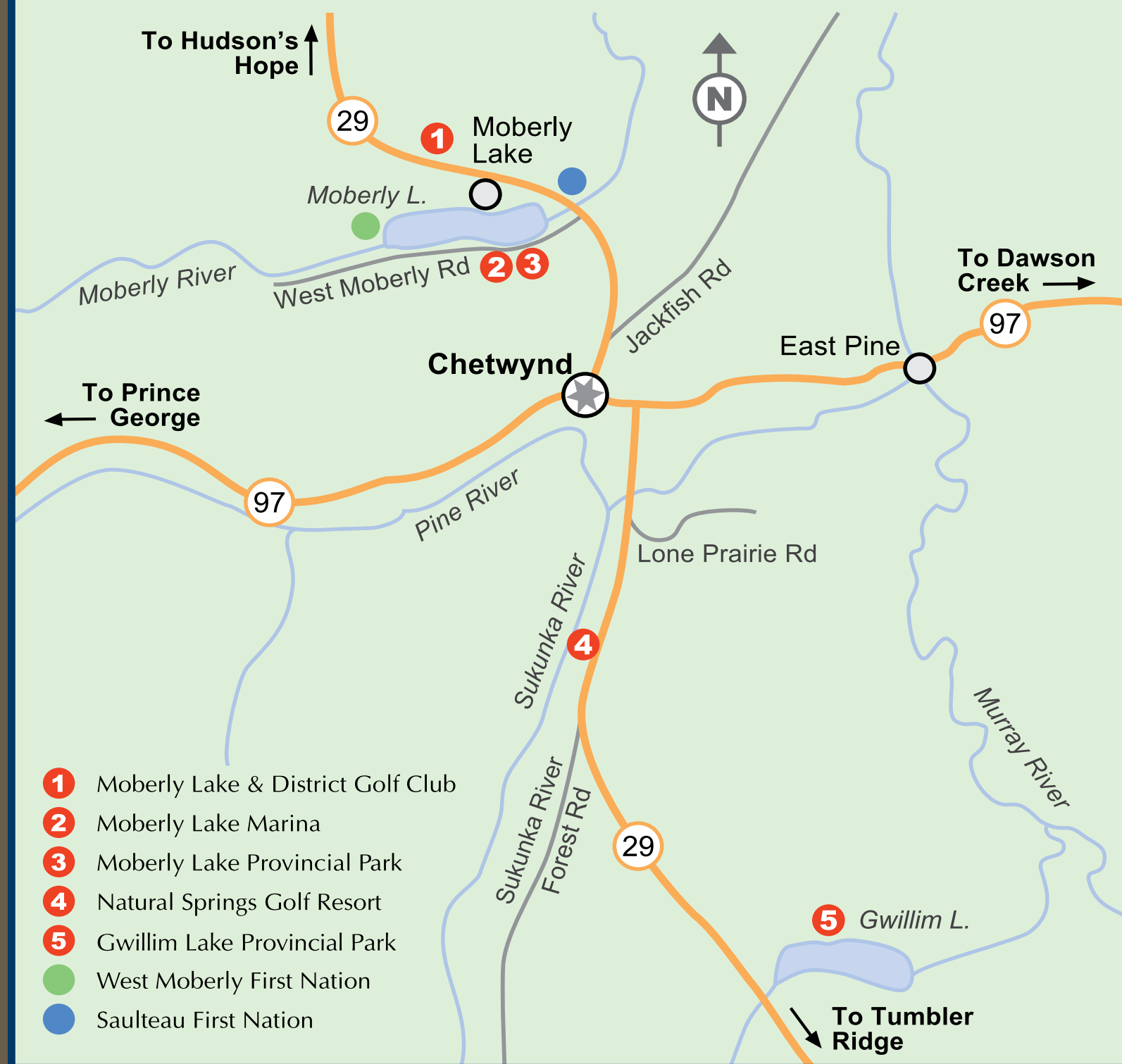
Chetwynd

Chetwynd, B.C.



VISITOR CENTRE
OPEN YEAR ROUND
5217 North Access Road just off Highway 97
Phone (250) 788-1943
Fax (250) 788-1846
Email tourist@gochetwynd.com

CHETWYND AREA MAP



Fishing/Icefishing

Chetwynd and area provides many opportunities for exciting fishing. Crystal clear lakes, bubbling creeks and rivers are home to several different species of fish. For those who enjoy lake fishing, Moberly Lake is home to northern pike, lake trout, and ling cod. Other area lakes which are very popular include Azouzetta, Gwillim, Jackfish, Moose, and Williston lakes. Try your luck for rainbow trout, lake char, eastern brook trout, kokanee, whitefish, grayling, and dolly varden.

Flyfishing is an activity which many outdoor enthusiasts enjoy. Potential spots for flyfishing in the Chetwynd area include the Burnt, Pine, Sukunka, Moberly, Wolverine, Peace, and Murray rivers as well as Carbon Creek. Check the current fishing regulations before you head out for details on which sections of each river or creek are open for fishing.

Icefishing is a popular winter activity. Check the regulations to ensure that the season is open on the lake you wish to fish, and inquire locally as to ice conditions before heading out.

Need to pick up a license or some new fishing gear? Stop by one of Chetwynd's sporting goods or hardware stores for tips and equipment. Licenses are also available at the Chetwynd Visitor Centre.



Recreation Centre

Chetwynd's Recreation Centre is home to many different sporting events and clubs all year round as well as community functions and private events. The Recreation Centre began in 1971 when an indoor ice arena was constructed to replace the previous outdoor arena. The curling rink was added in 1981, and the meeting halls were added in 1985 and 1987. Up until 1989, the ice arena was used as a multipurpose surface in the summer with a portable pool and roller skating arena.

Today, the Chetwynd Recreation Centre is a multi-purpose facility which is home to a variety of recreation facilities, meeting rooms, conference rooms and more! Indoor facilities include a curling rink, ice surface, indoor walking/running track, climbing wall, restaurant, fitness centre/weight room, and the Chetwynd Leisure Pool. Offices, meeting rooms, banquet halls, a spacious lobby and the Tots of the North preschool are also located in the Chetwynd Recreation Centre. Outdoor facilities include a brand-new concrete skate park, ball diamonds, a tennis court and parking space. The Chetwynd Recreation Centre is home to numerous sports teams, curling leagues and a variety of fitness classes. Contact the Recreation Centre at 250-788-2214 for more information.



Curling

Facilities are available at the Chetwynd Recreation Centre. Chetwynd is home to bonspiels and league curling - ask at the Visitor Centre for contact information and event schedules.



Leisure Pool

The Chetwynd Leisure Pool opened in 1990 and was the first pool outside of Vancouver to have waves and use an ozone system. Facilities at the pool include the main pool with a beach area, four 25-metre swimming lanes, slide, wave machine, separate hot tub, sauna and brand-new waterslide with its own splash pool. A viewing deck, complete with tables is a great place to keep an eye on the action while staying dry. The Chetwynd Leisure Pool offers a variety of classes and training courses including Aquafit, leadership programs, swimming lessons for people of all ages, lifeguard training, birthday parties, fun events and more! Stop by the Visitor Centre, the Recreation Centre front desk or www.gochetwynd.com for more information.

Skate Park

Constructed in 2010, Chetwynd's skate park is a multi-purpose facility designed to be fun, safe and challenging for skateboarding, BMX, bicycle riding and inline skating. The Skate Park is open to the public and there is no charge to use this facility.



Speed Skating

The Chetwynd Auroras speed skating club enjoys ice time at the Chetwynd Recreation Centre and, weather permitting, a long-track oval at nearby Rotary Park. The speed skating club is very active and has enjoyed great success at regional and provincial meets. Contact the Chetwynd Visitor Centre for more information.