

COMMUNITY CARVED BY SUCCESS





WELCOME



Chetwynd was originally called Little Prairie by the First Nations people who traveled through the area. Fur traders came to the area of Little Prairie as early

as 1778 following the water routes and pack trails of the day. By 1919 a log cabin, built on the site just north of the present rail yard opened as a small Trading Post. This attracted a number of others to build around it, and so the community of Little Prairie grew.

The Pacific Great Eastern Railway, or P.G.E. as it was originally known, arrived officially on April 8th, 1958 in Little Prairie. The Railway station was built in 1959 and Chetwynd became a divisional point for the railroad. When the Pacific Great Eastern Railway arrived in Chetwynd they officially named the divisional point Chetwynd in honor of the Hon. Ralph Chetwynd, past Minister of Railways and staunch supporter of development in the Peace Region. The Post-office and community followed their lead.

Chetwynd was incorporated as a village in September of 1962, and was re-incorporated as a district in 1983.

INSIDE

| | |
|---------------------------|----|
| Spring | 4 |
| Summer | 6 |
| Chetwynd Area Map | 9 |
| Fall. | 10 |
| Chainsaw Carvings | 11 |
| Winter | 12 |
| What to Do | 16 |
| Where to Go | 17 |
| Where to Stay & Eat . . . | 18 |
| More to Do | 19 |



Chetwynd Visitor Centre
Phone 250.788.1943
Email tourist@gochetwynd.com

SPRING



Day Trips

Make Chetwynd your home base for exploring the mighty Peace region. Chetwynd's full complement of services will make your stay comfortable and provide you a warm and welcome place to rest after your day's adventures in the area.

Dawson Creek: Spend a day exploring the historic city of Dawson Creek. Be sure to visit the N.A.R. park, home to the Art Gallery, Museum, and Visitor Centre. A few steps away is the often photographed Mile Zero post, marking the official beginning of the Alaska Highway. Other attractions in Dawson Creek include the Walter Wright Pioneer Village, a number of

golf courses, shopping and restaurants.

Tumbler Ridge: Take the time to travel out to Tumbler Ridge, where you can walk paths made by dinosaurs. Guided tours of the dinosaur tracks are available in the summer months- contact the Tumbler Ridge Visitor Centre (250) 242-3123 for more information. The Tumbler Ridge Community Centre houses an excellent display of dinosaur fossils including footprints, as well as many other interesting artifacts. Tumbler Ridge offers a full range of services including fuel, restaurants, and a recreation centre with a pool, weightroom, and climbing wall. Local hiking groups have built and maintain a large number of hiking trails in the area, giving you the opportunity to stroll in the woods and take in some breathtaking views. Detailed maps of the trails are available from the Tumbler Ridge Visitor Centre. The Dinosaur Discovery Gallery opened in 2010 and is a highly interesting attraction featuring fossils and information about the dinosaur

discoveries in the area. Contact the Tumble Ridge Visitor Centre for more information.

Hudson's Hope: The land of dinosaurs and dams, Hudson's Hope is a great place to explore the distant past and also to learn about hydroelectricity. Hudson's Hope is the home of both the Peace Canyon and W.A.C. Bennet dams. The W.A.C. Bennet dam has a visitors' centre complete with restaurant, where films of the construction of the dam are shown and several interactive displays are available to help you learn how the dams work. The W.A.C. Bennet dam also offers underground tours- take a ride on the tour bus right inside the dam! The Hudson's Hope Museum, located across the street from the Visitor Centre, houses an excellent collection of dinosaur fossils and local artifacts. Hudson's Hope is a full service stop with gas stations, restaurants, shopping, and parks where you can stop and enjoy the scenery.



Fishing

Chetwynd and area provides many opportunities for exciting fishing. Crystal clear lakes, bubbling creeks and rivers are home to several different species of fish. For those who enjoy lake fishing, Moberly Lake is home to northern pike, lake trout and ling cod. Other area lakes which are very popular include Azouzetta, Gwillim, Jackfish, Moose and Williston lakes. Try your luck for rainbow trout, lake char,

eastern brook trout, kokanee, whitefish, grayling and dolly varden.

Flyfishing is an activity which many outdoor enthusiasts enjoy. Potential spots for flyfishing in the Chetwynd area include the Burnt, Pine, Sukunka, Moberly, Wolverine, Peace and Murray rivers as well as Carbon Creek. Check the current fishing regulations before you head out for details on which sections of each river or creek are open for fishing.



ATV-ing

Chetwynd and surrounding area is full of great trails to spend the day ATV-ing or dirt biking. Stop in at the Visitor Centre to get your back roads map.

Don't Forget!

- Always wear proper safety equipment when operating an ATV.
- Ensure you have proper insurance to travel on BC backroads.

SUMMER



Camping

For the camping enthusiast we have two provincial parks close to Chetwynd, Moberly Lake Provincial Park located on Highway 29 North of Chetwynd and Gwillim Lake Provincial Park located on Highway 29 south of Chetwynd towards Tumbler Ridge. We also have camp grounds on Cameron Lake, Big Lake and many rec sites along the Pine and Sukunka River.



Boating

Explore some of Chetwynd's beautiful lakes from the comfortable seat of your boat. Tranquil lake boating experiences are available on Moberly and Gwillim lakes, while non-motorized boaters can paddle the shores of Sundance Lake. Many smaller lakes are accessible via back roads-inquire at the Chetwynd Visitor Centre for a Backroads Map of your own.

For those who crave a little more adventure, the Sukunka, Moberly, and Pine rivers offer jet boating opportunities. Be sure to check the water conditions of the river you plan to explore before you head out. Depending on water levels, area rivers are popular destinations for canoeists and kayakers as well. There are several put-ins and take-outs along the different rivers, allowing you to customize the length of your trip.

All boaters are required to have a Pleasure Craft Operators Card

Swimming

Take the plunge and refresh your senses with a dip in one of Chetwynd's area lakes or rivers. Moberly and Gwillim Lake Provincial Parks offer swimming areas. The banks of the Sukunka River south of Chetwynd on Highway 29 offer a rocky beach and the occasional sand bar for swimming, wading and sunbathing. Swimming is also possible in other area water bodies-ask at the Chetwynd Visitor Centre for locations.

For those who prefer to swim in warmer waters, the Chetwynd Rec Centre has a Leisure Pool that is open year round. Ask the Chetwynd Visitor Centre or call the Chetwynd Rec Centre (250-788-2214), or visit www.gochetwynd.com for the Leisure Pool swim schedule.





Golf

Golfers delight in exploring Chetwynd's fabulous **Moberly Lake and District Golf Course**. Enjoy a relaxing game and beautiful scenery while you perfect your shots. Chetwynd's course offers a golf experience that you are sure to savor - you will want to play over and over again! Tournaments and special events are hosted throughout the season - call the course or ask at the Chetwynd Visitor Centre for details.

Situated on the hillside overlooking beautiful Moberly Lake, this par 37, 9-hole course offers a variety of challenges. Hilly terrain and tree-lined fairways offer a new challenge to both new and experienced golfers. Club and cart rentals are available. After your game, treat yourself to a great meal and a cold drink at the picnic area overlooking the lake. Call 250-788-3808 to book a tee time.



Skate Park

Constructed in 2010, Chetwynd's skate park is a multi-purpose facility designed to be fun, safe and challenging for skateboarding, BMX bicycle riding and inline skating. The Skate Park is open to the public and there is no charge to use this facility.



Canada Day Fun!

Watch or join in the parade, then meet up with the rest of the community at Spirit Park, which is centrally located, for a variety of games and activities. Enjoy a spectacular fireworks show display by Chetwynd's Volunteer Fire Department.



Hiking and Biking Trails

Chetwynd's hiking trail system evolved through a series of community projects, with the assistance of many local residents. Mr. Dave Gee was one of the first supporters of the trail system in 1980, along with the Chetwynd Secondary School and the Chamber of Commerce. Other participants have included corporate sponsors, the Senior Physical Education classes at Chetwynd Secondary School under the leadership of Stu Garland, and the Chetwynd Environmental Society. The Chetwynd Community Forest Society was active in developing the Community Forest trails, and the Chetwynd Cross Country Ski Club helped to build the cross-country ski trails located in the Community Forest. Most recently, through the "Trails for Tomorrow" program, extensive trail upgrades, new trail construction and new signage has been added to the Chetwynd trail system during the summer of 2009. New benches and trail markers have been installed along many of the trails in the area.



The Connector Trail leads from the Little Prairie Heritage Museum to a junction with the Mt. Baldy Trail, then continues on to Widmark Falls. Use caution on this trail as some parts are steep.

The Baldy Trail takes a scenic route up the side of Mt. Baldy. Leave from either the parking area along 45 Avenue or from the powerline access along Highway 29 N and follow the trail to the summit of the mountain. A viewpoint has been constructed approximately halfway up which provides excellent views of the town and the valley. The viewpoint is a good place to take a break or turn around. Once at the top of the mountain, the adventurous can continue to follow the trail to Ghost Mountain. Use caution along this section of the trail as some sections are steep.

Chetwynd's Community Forest features two trail systems. The first is an interpretive trail leading hikers through the community forest. The second is the snow shoe trails, which are very popular in winter.

The Windrem Trail winds through town, starting at Don Titus Elementary School and ending near the Legion building. This trail is quite flat and makes a very pleasant evening or morning stroll. Watch for traffic at several street crossings.

The Centurion Creek Trail System contains many different interconnecting trails. On this trail network you can explore the creek, where you may see beavers and many types of birds. There are many different points where you can enter and exit this trail system, making it ideal for multiple hiking trips.

Trails are shared with local wildlife.



CHETWYND AREA MAP



FALL



Hunting

Wildlife is abundant in the fertile valleys and rolling hills near Chetwynd. Hunters have the opportunity to try for deer, moose, elk, black bears and grizzly bears.

Limited entry draws are available for mountain goats, buffalo and other species. Whether you join a licensed guide outfitter or head out on your own, hunting in the Chetwynd area is sure to be an experience you will never forget! Hunting licenses and tags can be purchased in and around Chetwynd.



Leisure Pool

The Chetwynd Leisure Pool opened in 1990. Facilities at the pool include the main pool with a beach area, four 25-metre swimming lanes, slide, wave machine, separate hot tub, sauna and waterslide with its own splash pool. A viewing deck, complete with tables is a great place to keep an eye on the action while staying dry. The Chetwynd Leisure Pool offers a variety of classes and training courses including Aquafit, leadership programs, swimming lessons for people of all ages, lifeguard training, birthday parties, fun events and more! Stop by the Chetwynd Visitor Centre, the Rec Centre front desk or go to www.gochetwynd.com for more information.





WHAT'S WITH ALL THE CHAINSAW CARVINGS?

Chetwynd is home to beautiful handcrafted chainsaw sculptures of indigenous animals, fantasy or mythological and local scenes that can be found throughout town, businesses and homes.

Use the map of the chainsaw sculpture locations to stroll around for photo opportunities with these sculptures. This is your chance to get up close and personal with a Grizzly bear! Inquire at the Visitor Centre.

The chainsaw carving project began as part of the Rendezvous '92 Committee, which was created to help with celebrations for the 50th anniversary of the construction of the Alaska (Alcan) highway. The Chetwynd Rendezvous '92 Committee wished to leave a lasting legacy of the community's participation in the special event to celebrate this milestone of the Alaska Highway.

On December 31, 1990, a meeting of major businesses and community groups was called to discuss the idea of commissioning three bears which form part of the Welcome to Chetwynd sign display. Unanimous approval was given to commission the bear sculptures from master carver, Terry McKinnon.

Since completion of the bear scene, businesses, residents and fundraising efforts of the

committee have supported the project. In the first year, the Rendezvous '92 committee held 42 different fundraisers to raise the money to bring the first carvings into town. Some of these fundraisers included baking cookies, hosting dances and events centered around a visit to town by the first woman in space.

In 2005 Chetwynd hosted the first annual Chetwynd International Chainsaw Carving Championship, hosting seven carvers from B.C. and the United States. In 2006, the number of carvers attending increased to twelve carvers from all across North America. Chetwynd is now drawing international attention with carvers coming all the way from places as far as Japan, Australia and Wales. Spectators are also traveling to Chetwynd from distances as great as the lower United States.

The carvings themselves are becoming more intricate, with details so fine it is hard to believe that they were created with a chainsaw. Now there are over 150 carvings located in various places around town.

Look forward to the annual Chetwynd International Chainsaw Carving Championship Invitational the 2nd weekend of June every year.



WINTER



Ice Fishing

Icefishing is a popular winter activity. Check the regulations to ensure that the season is open on the lake you wish to fish, and inquire locally as to ice conditions before heading out.

Need to pick up some new fishing gear? Stop by one of Chetwynd's sporting goods or hardware stores for tips and equipment and Lone Star Sporting Goods for a license.

Licenses are also available online at www.fishing.gov.bc.ca.

Skiing/Snowboarding

Powder King is Chetwynd's nearest ski area. Famous for lots of deep powder snow, this hill provides opportunities for skiers and snowboarders to test their skills and enjoy beautiful views of the Rocky Mountains. Powder King is located approximately 115 km south of Chetwynd on Highway 97. Facilities include lodge, on-hill accommodations and equipment rentals. Powder King has one chairlift, one T-bar and one handle tow. www.powderking.com • 1-866-769-5464





Snow-Shoeing and Cross-Country Skiing

Chetwynd has many Trails that are great for all seasons and all experience levels. In the winter, enjoy the trails by snow-shoeing and cross-country skiing.



Hockey / Figure Skating / Speed Skating

The Chetwynd Rec Centre is home for hockey teams, tournaments, figure skaters, carnivals as well as speed skaters and local meets.

Inquire at the Rec Centre for club contacts.



Curling

Facilities are available at the Chetwynd Rec Centre. Chetwynd is home to bonspiels, league curling and junior curling – ask at the Chetwynd Rec Centre for contact information and event schedules.

The North Pole Project

Celebrating the winter season at the North Pole downtown Chetwynd!





Snowmobiling

Whether it's the quiet solitude of the forest or the exhilaration of a wide open throttle on an untracked alpine meadow, Chetwynd is the place for you, your sled and your friends. A sledder's dream awaits you.

Chetwynd and area is famous for excellent snow conditions, a long riding season, great trails to suit riders of all skill levels and full services for snowmobile enthusiasts. Visit the local snowmobile shop for gear, parts or tips before you head out on one (or more!) of the fantastic trails in the area. Silver Sands, Callazon and Powder King areas are very popular, as are Hasler and the Burnt areas. Inquire locally about radio channels for back road access. Many local accommodations offer special packages for snowmobilers - call the Chetwynd Visitor Centre for more information. Be sure to stop by and pick up a copy of the local snowmobile trail map and the latest snow reports!

Contact Info:

Pine Valley Trail Blazers Snowmobile Club

Box 2415, Chetwynd, BC V0C 1J0

or contact IRC Cat Shack at 250-788-9558

Safety

Snowmobiling can have elements of danger. It is important to be prepared for any situation that may arise. Be aware of your surroundings, always let someone know your destination, always wear an avalanche beacon, make sure to carry a shovel and probe and always travel in groups. **Most importantly, just use common sense**

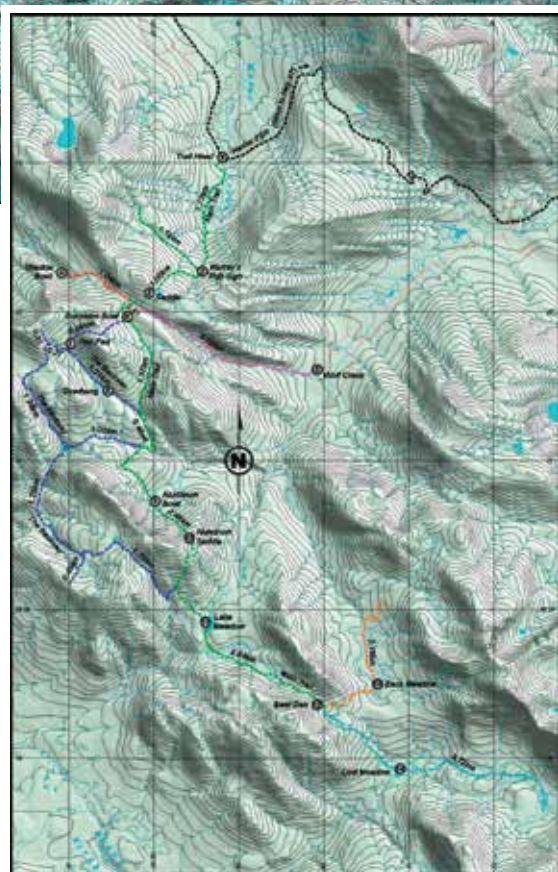
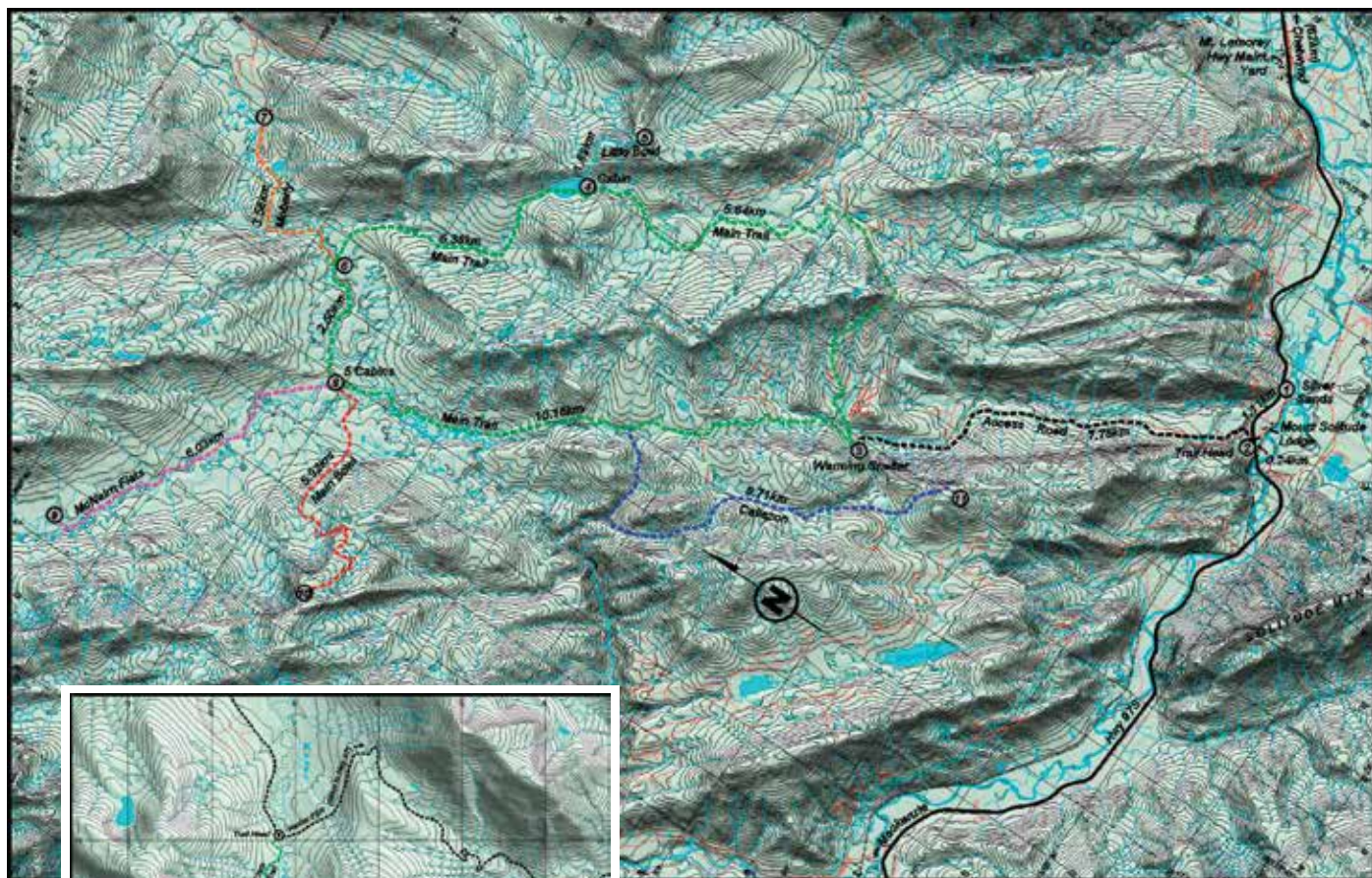
Environment

As a snowmobiler, it is up to all of us to protect the environment, not only to preserve the land for our children but to also protect our riding areas to make sure that they are there for everyone. So remember to carry out what you bring in, do not cut or damage any trees or shrubs. Respect and keep your distance from all wildlife. **Protect and maintain the areas that we have**

Signage

The signage on the existing trails are coordinated to make it easier to tell if you are heading towards or away from home. **Please respect these signs; damage or moving these signs could put a snowmobiler at risk**





HASLER SNOWMOBILE TRAIL NETWORK

| | | |
|----------------------|------------|-------------|
| 1. Trail Head | N55 23'03" | W122 16'12" |
| 2. Murray's Pub Sign | N55 22'17" | W122 19'26" |
| 3. Saddle | N55 22'08" | W122 20'04" |
| 4. Shadow Bowl | N55 22'16" | W122 21'07" |
| 5. Wolf Creek | N55 21'37" | W122 18'05" |
| 6. Sunshine Bowl | N55 21'58" | W122 20'19" |
| 7. Heli Pad | N55 21'48" | W122 21'00" |
| 8. Overhang | N55 21'29" | W122 20'34" |
| 9. Aluminum Bowl | N55 20'44" | W122 20'00" |
| 10. Aluminum Saddle | N55 20'29" | W122 19'36" |
| 11. Lake Meadow | N55 19'55" | W155 19'24" |
| 12. Bear Den | N55 19'22" | W122 18'05" |
| 13. Back Meadow | N55 19'30" | W155 17'23" |
| 14. Lost Meadow | N55 18'56" | W122 17'07" |

SILVER SANDS SNOWMOBILE TRAIL NETWORK

| | | |
|-------------------------|------------|-------------|
| 1. Silver Sands | N55 30'39" | W122 33'24" |
| 2. Trail Head | N55 30'37" | W122 34'23" |
| 3. Warming Shelter | N55 33'40" | W122 38'08" |
| 4. Cabin | N55 37'09" | W122 37'10" |
| 5. Little Bowl (Summit) | N55 37'00" | W122 36'00" |
| 6. Trail Junction | N55 38'43" | W122 40'26" |
| 7. Moberly Trail End | N55 40'00" | W122 39'15" |
| 8. 5 Cabins | N55 38'05" | W122 42'06" |
| 9. McNairn Trail End | N55 39'29" | W122 46'36" |
| 10. Trail End (Summit) | N55 37'10" | W122 45'10" |
| 11. Callazon (Summit) | N55 32'36" | W122 37'54" |

WHAT TO DO



Rec Centre

Chetwynd's Rec Centre is home to many different sporting events and clubs all year round as well as community functions and private events. The Rec Centre began in 1971 when an indoor ice arena was constructed to replace the previous outdoor arena. The curling rink was added in 1981, and the meeting halls were added in 1985 and 1987. Up until 1989, the ice arena was used as a multipurpose surface in the summer with a portable pool and roller skating arena.

Today, the Chetwynd Rec Centre is



a multipurpose facility which is home to a variety of recreation facilities, meeting rooms, conference rooms and more!

Indoor facilities include a curling rink, ice surface, indoor walking/running track, climbing wall, restaurant, fitness centre/weight room, squash/raquetball court and the Leisure Pool. Offices, banquet halls, and a spacious lobby are also located in the Chetwynd Rec Centre. Outdoor facilities include the concrete skate park and ample parking space.

The Chetwynd Rec Centre is home to numerous sports teams, curling leagues and a variety of fitness classes. Contact the Rec Centre at 250-788-2214 for more information.

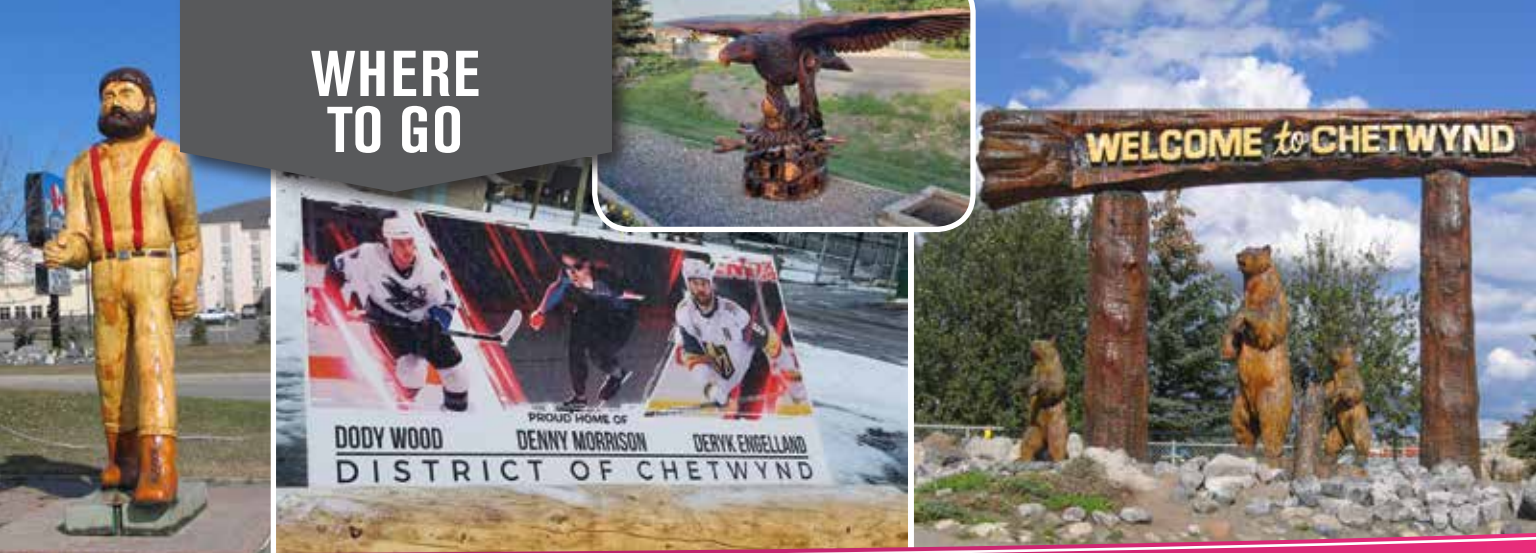


Chetwynd's Visitor Centre

Chetwynd's Visitor Centre is located at 5400 North Access Road just off Highway 97. Stop by for an excellent selection of local, regional, provincial and national information. The Chetwynd Visitor Centre also stocks a wide range of gift items and souvenirs, featuring local artists. Come in and browse through the information, pick up gifts, or talk with any of the knowledgeable, professional Visitor Centre Information Counsellors who will be more than happy to help you plan your vacation.



WHERE TO GO



The Little Giant

The Little Giant came to Chetwynd on July 4, 1966. He was unveiled to the community by Richard Chetwynd, grandson of the Honorable Ralph Chetwynd after whom the town was named. The Little Giant is 9 feet tall and weighs 1,200 pounds.

The Little Giant serves as Chetwynd's mascot. He stands for the spirit of our residents who are hardworking pioneers, having the initiative to work on their problems and stride into the future with pride.

In 2009, the original concrete Little Giant was replaced by a chainsaw carved replica. The new Little Giant was carved by Ken Sheen out of pine which had been affected by Mountain Pine Beetles.

THE LITTLE GIANT OF THE PEACE

The Little Giant of the Peace, his axe held in his hand,
He strode across the mountain tops, and viewed the valleys grand,
He walked along the riverbank, where foaming rapids roar,
For his dinner, he chose a fish, and ate it on the shore.
He explored the northern forest, with all its natural wealth,
With wild fowl and beast and berries he kept in perfect health,
He sat beside his fire at night, and heard the wild loons cry,
Watched the colored northern lights that rippled 'cross the sky.
He wrestled with the mountain lion that chanced to come his way,
And with his good old trusty axe, kept grizzly bears at bay.
He showered 'neath the waterfalls that flow from mountains high,
And slept beneath the stately pine, his roof the starlit sky.
But today he is immobile and can no longer roam,
So they stood him up in Chetwynd, so he may feel at home.
In the Big Peace Country, we hope he'll always stay,
The Little Giant of the Peace, his axe held in his hand.

~ by Jane Martin

Little Prairie Heritage Museum

Come and explore the history of the Chetwynd area at the Little Prairie Heritage Museum.

Featuring five buildings and a caboose full of artifacts including dinosaur fossils, a collection of over 2,500 cream pitchers, household items and much more, the Little Prairie Heritage Museum is an ideal place to spend an afternoon.

A beautiful gazebo on the grounds provides a great place to take photos. Travellers with RVs will find a 'by-donation' sani-dump located directly beside the museum.

Please contact the Chetwynd Visitor Centre for more information.



WHERE TO STAY & EAT



Stay with Us!

Chetwynd offers a full range of accommodations including full-service hotels, motels and cozy B&Bs. Campers can enjoy a stay in one of several well-equipped RV Parks or at one of the area's spectacular Provincial Parks.

Contact the Chetwynd Visitor Centre for a complete list of accommodations in Chetwynd. Phone (250) 788-1943 or tourist@gochetwynd.com.



Great Local Food!

Tempt your tastebuds at one of Chetwynd's many dining establishments. Whether you're craving fast food, in the mood for homestyle cooking, or want a taste of exotic cuisine, you can satisfy it here! Many local restaurants offer daily lunch and dinner specials.

Inquire at the Chetwynd Visitor Centre for a complete list of local restaurants. Phone (250) 788-1943. Email tourist@gochetwynd.com



MORE TO DO



Pine Valley Exhibition Park

Pine Valley Exhibition Park is located in the Rodeo Subdivision. This facility offers horse stalls and pen rentals, indoor and outdoor riding arenas, a race track, and multiple baseball diamonds. Pine Valley Exhibition Park is home to local gymkhanas, team roping, poker rides, and riding clinics. The baseball diamonds are home to the Chetwynd Recreational Slo-Pitch League, and often host tournaments during the summer months.

Bird Watching in Chetwynd

The town of Chetwynd is nestled in the foothills at the western edge of the Peace River region of Northeastern BC. There has been at least 230 different species of birds found in the Chetwynd area.



Visit the Chetwynd Visitor Centre for dates and more details on these and other exciting Chetwynd events!

Easter Eggstravaganza:

This Community Easter Event is sure to start your long weekend off hopping!

International Chainsaw Carving Championship:

Come on down to the Chetwynd Rec Centre and watch amazing artists work their magic with chainsaws.

Peace Region Community to Community Poker Ride:

Motorcycle riders in the Peace Region hit the road for a beautiful circle tour building a poker hand as they go!

Chetwynd Harvest Festival:

A multitude of Fall treats for the entire community!

Halloween Ghoulish Affair:

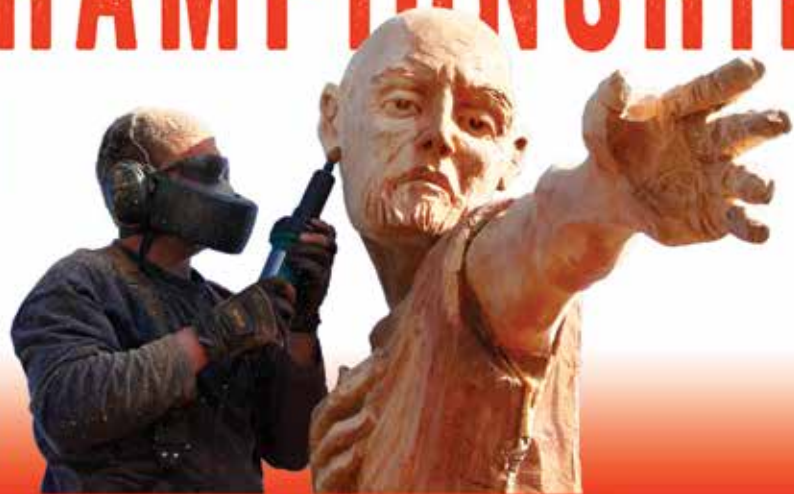
The Spooky Season brings fun and excitement for the whole family on Halloween!



CHETWYND INTERNATIONAL CARVING CHAMPIONSHIP

Second weekend
in June every year

Don't miss the excitement!



Tel: 250-788-1943

email: tourist@gochetwynd.com



Chetwynd International Chainsaw Carving Championship

www.gochetwynd.com